

CSL Pedals



Manual

To get the most out of your CSL Pedals, please read this manual before first use. It contains important health and safety information and should be retained for future reference.

Index

1. General
2. Compatibility
3. Package Contents
4. Assembly
 - 4.1 Plan Your Setup

- 4.2 Pedal Adjustment
- 4.3 Hard-Mount
- 4.4 Connections
- 4.5 Recommended Accessories
- 5. Cleaning
- 6. Maintenance
- 7. Troubleshooting
- 8. Video Guide
- 9. Serial Number
- 10. Trademarks
- 11. Product Recycling
- 12. Compliance
- 13. Warranty

WARNING!

Photosensitive Seizures

A small percentage of people may experience a seizure when exposed to certain visual images, including flashing lights or patterns that may appear in video games. Even people who have no history of seizures or epilepsy may have an undiagnosed condition that can cause these “photosensitive epileptic seizures” while watching video games. These seizures may have a variety of symptoms, including light-headedness, altered vision, eye or face twitching, jerking or shaking of arms or legs, disorientation, confusion, or momentary loss of awareness. Seizures may also cause loss of consciousness or convulsions that can lead to injury from falling down or striking nearby objects. Immediately stop playing and consult a doctor if you experience any of these symptoms. Parents should watch for or ask their children about the above symptoms – children and teenagers are more likely than adults to experience these seizures. The risk of photosensitive epileptic seizures may be reduced by taking the following precautions:

- Sit farther from the TV screen.
- Use a smaller TV screen.
- Play in a well-lit room.
- Do not play when you are drowsy or fatigued.

If you or any of your relatives have a history of seizures or epilepsy, consult a doctor before playing.

WARNING!

Musculoskeletal disorders

Use of game controllers, keyboards, mice, or other electronic input devices may be linked to serious injuries or disorders. When playing video games, as with many activities, you may experience occasional discomfort in your hands, arms, shoulders, neck, or other parts of your body. However, if you experience symptoms such as persistent or recurring discomfort, pain,

throbbing, aching, tingling, numbness, burning sensation, or stiffness, **DO NOT IGNORE THESE WARNING SIGNS. PROMPTLY SEE A QUALIFIED HEALTH PROFESSIONAL**, even if symptoms occur when you are not playing a video game. Symptoms such as these can be associated with painful and sometimes permanently disabling injuries or disorders of the nerves, muscles, tendons, blood vessels, and other parts of the body. These musculoskeletal disorders (MSDs) include carpal tunnel syndrome, tendonitis, tenosynovitis, vibration syndromes, and other conditions.

While researchers are not yet able to answer many questions about MSDs, there is general agreement that many factors may be linked to their occurrence, including medical and physical conditions, stress and how one copes with it, overall health, and how a person positions and uses their body during work and other activities (including playing a video game). Some studies suggest that the amount of time a person performs an activity may also be a factor. If you have questions about how your own lifestyle, activities, or medical or physical condition may be related to MSDs, see a qualified health professional.

PACKAGE CONTENTS

1. GENERAL

ATTENTION!

- The device must not be exposed to rain or humidity in order to avoid risk of fire and / or electric shock.
- Operating room temperature: 15°C - 35°C
- Excessive use may cause health risks. We recommend taking a 5 minute break after every 20 minutes of use. Do not drive for more than 2 hours per day.
- We strongly advise you to not drive a vehicle immediately after using a video game.
- In case of interference with other wireless 2.4 GHz devices, the interfering devices must be removed or switched off.
- Not intended for children under the age of 6 years old. Contains small pieces which pose a choking hazard!
- Do not open the casing of the device.
- This device contains components that cannot be repaired by the user, opening will void the warranty.

WARNING!

The CSL Pedals must be connected to the appropriate wheel base port or PC USB port if using the ClubSport USB Adapter:

- If the CSL Pedals becomes damaged in any way, stop usage immediately and contact Fanatec® Customer Support: <https://help.fanatec.com/hc/en-us>
- All specifications in this document are subject to change. The PC driver may be updated to implement new features or general improvements.
- This manual discusses assembly, connections, and functions related to Fanatec® devices and other additional devices. This is not a replacement manual for the other corresponding products!

Read the quick guides or user manuals for the other products!

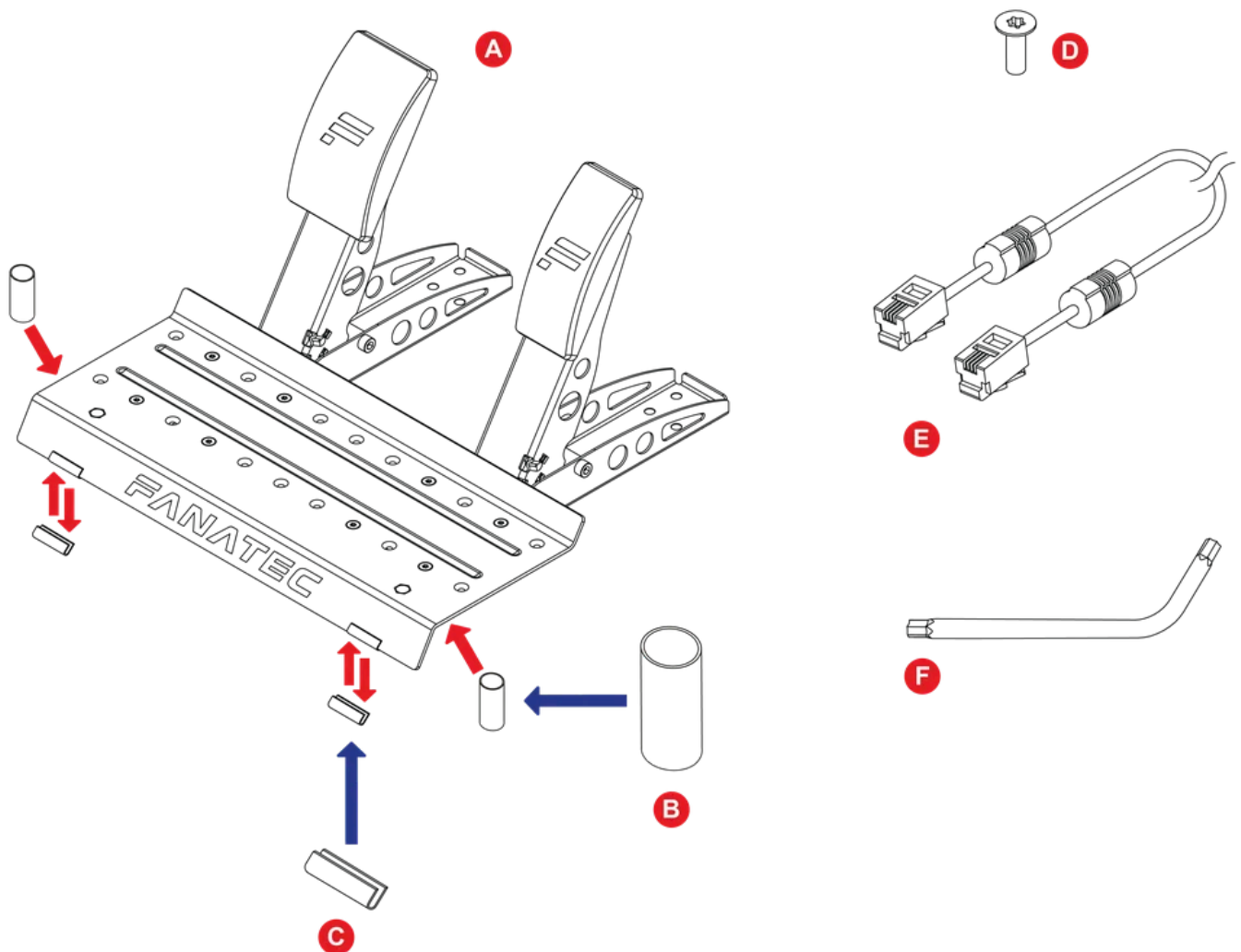
• The warranty does not include defects that are due to commercial use of the product. See chapter “Warranty” at the end of this user manual as well as the Terms & Conditions on Fanatec.com for more details.

2. COMPATIBILITY

The CSL Pedals can be used with all CSL, CSL Elite, ClubSport, and Podium series wheel bases as well as standalone on a PC via the ClubSport USB Adapter.

IMPORTANT: CSL Pedals are fully usable out-of-the-box. We always recommend updating your Fanatec® devices to the latest firmware. A Windows PC and PC mode selected on the wheel base is required to perform firmware updates. Download the latest PC driver containing the latest firmwares from <https://www.fanatec.com/s/download-apps-driver>

3. PACKAGE CONTENTS



A - 1x CSL Pedals (2x Edge Protector 1.5 mm pre-installed)

B - 2x Hard Mount Spacer

C - 2x Edge Protector 2.5 mm (Adhesive Included)

- D - 8x M4x12 mm Countersunk Mounting Bolts
- E - 1x RJ12 Cable
- F - 1x T20 Torx Key

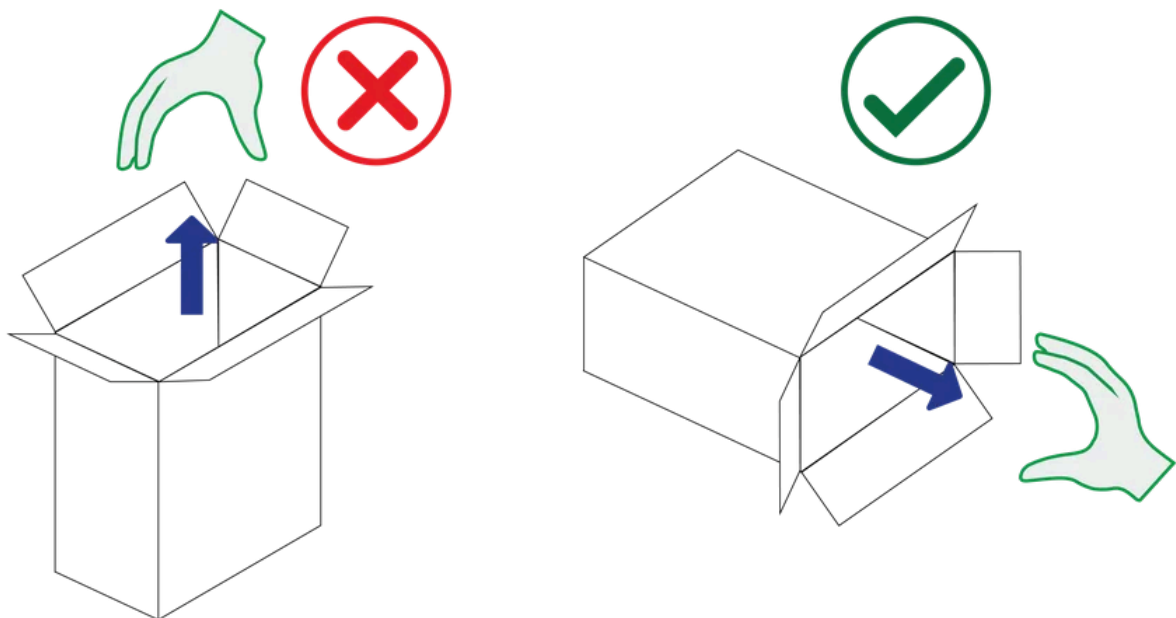
4. ASSEMBLY

4.1 PLAN YOUR SETUP

To get started with using the CSL Pedals, decide on your preferred pedal lever unit positions, pedal plate positions, and if you will hard-mount to a surface, then connect the CSL Pedals to your wheel base via the included RJ12 cable or to a PC via USB if using the ClubSport USB Adapter (not included). It is important to follow the chapter sequence of this manual for an effective assembly and setup procedure.

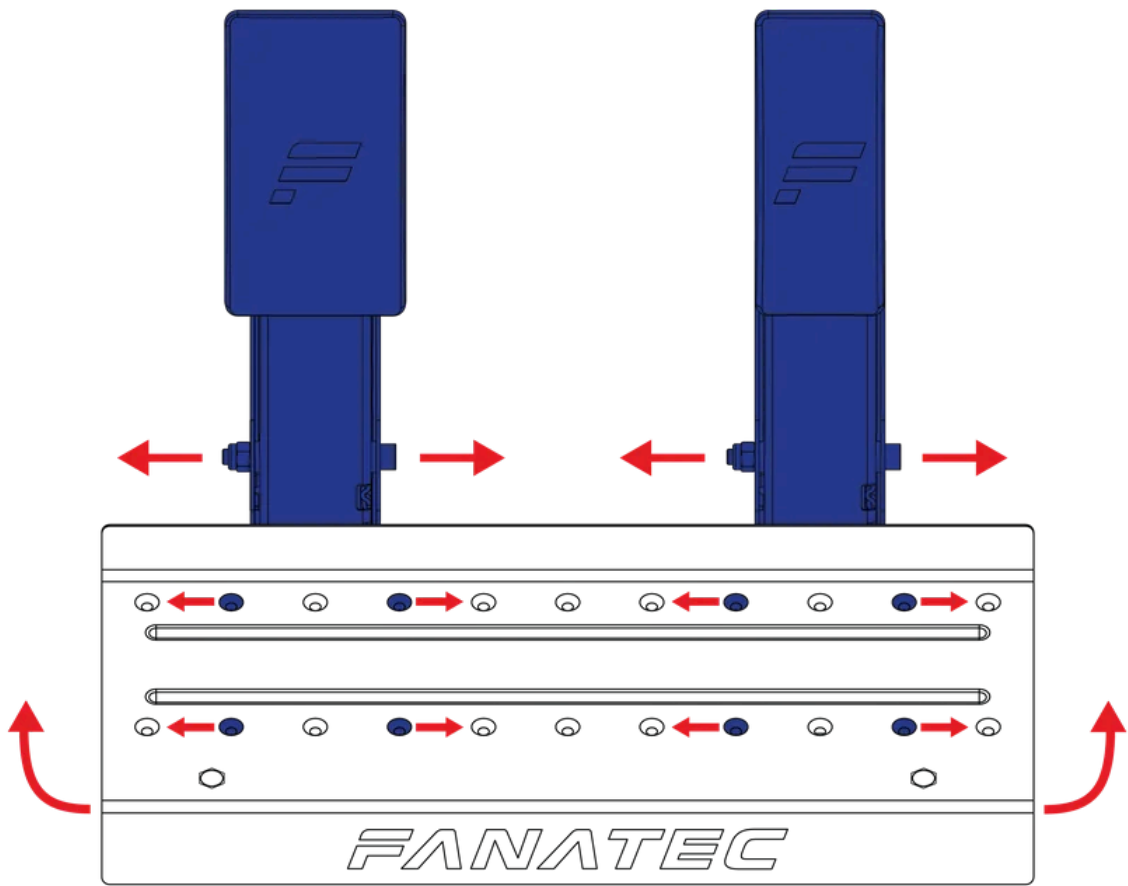
ATTENTION: See chapter 4.4 “Connections” for which type of add-on peripheral devices must be connected to which port of the CSL Pedals. Only use the included RJ12 cable from your CSL Pedals package contents to avoid damages!

ATTENTION: Rest the CSL Pedals box on its side in order to remove the contents without dropping any items and to avoid damages!

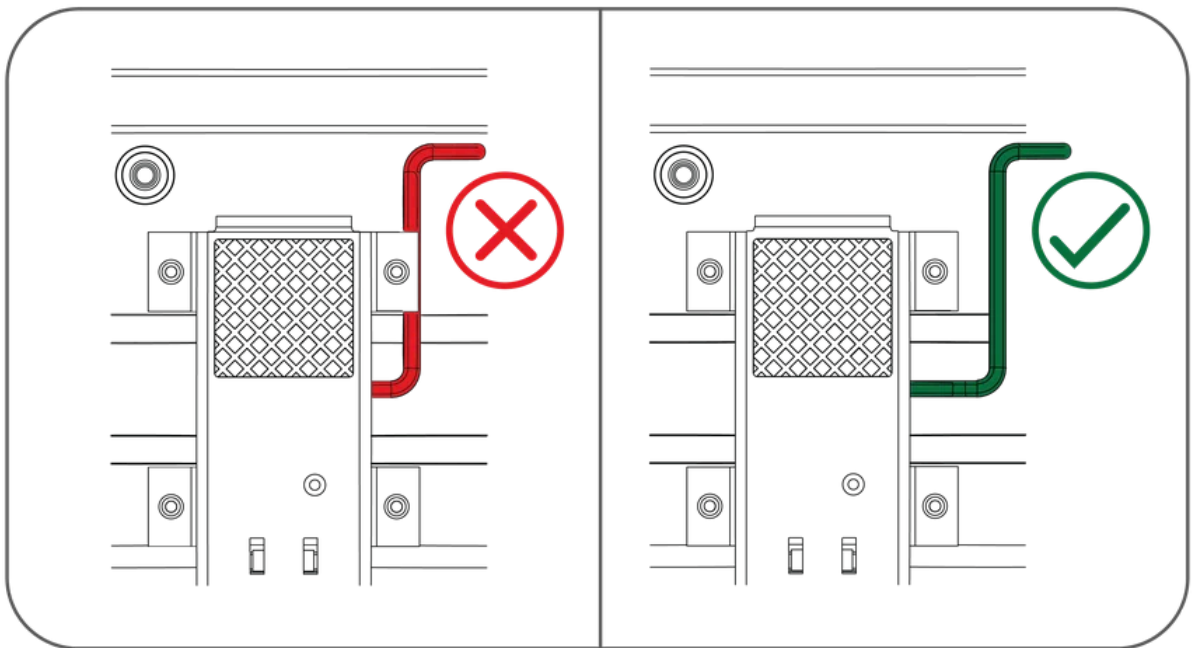


4.2 PEDAL ADJUSTMENT

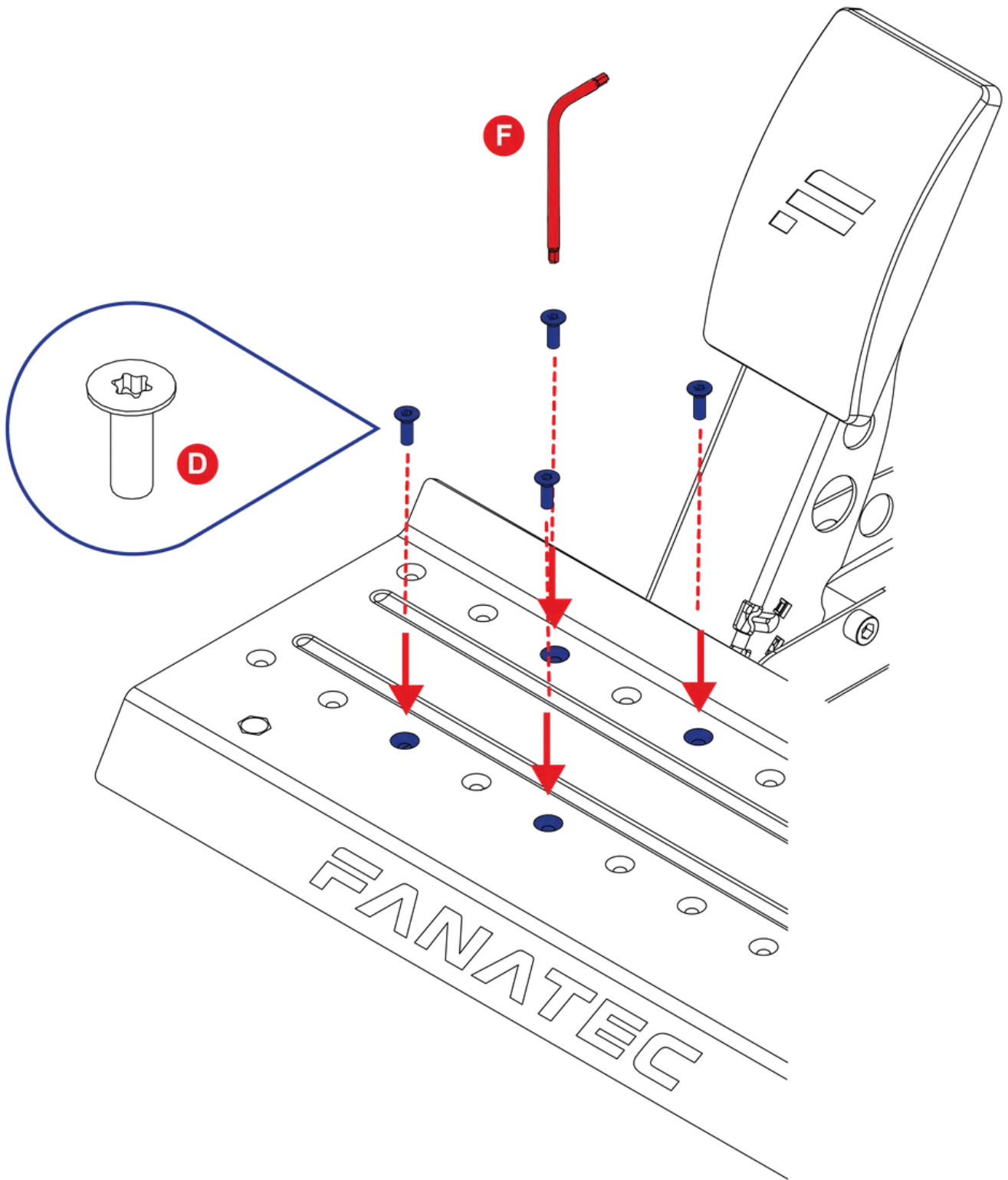
4.2.1 PEDAL LEVER UNITS



Lift the heel rest from the pedal units.
Align the holes of the pedal lever units with the holes of the heel rest once a desired position is selected.

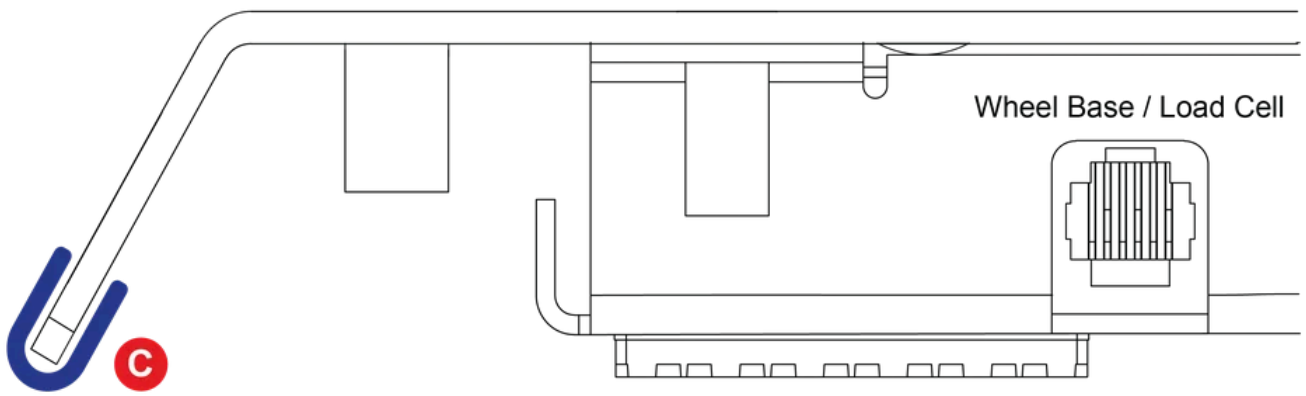


ATTENTION: Be careful not to pinch the brake pedal cable when placing the heel rest.



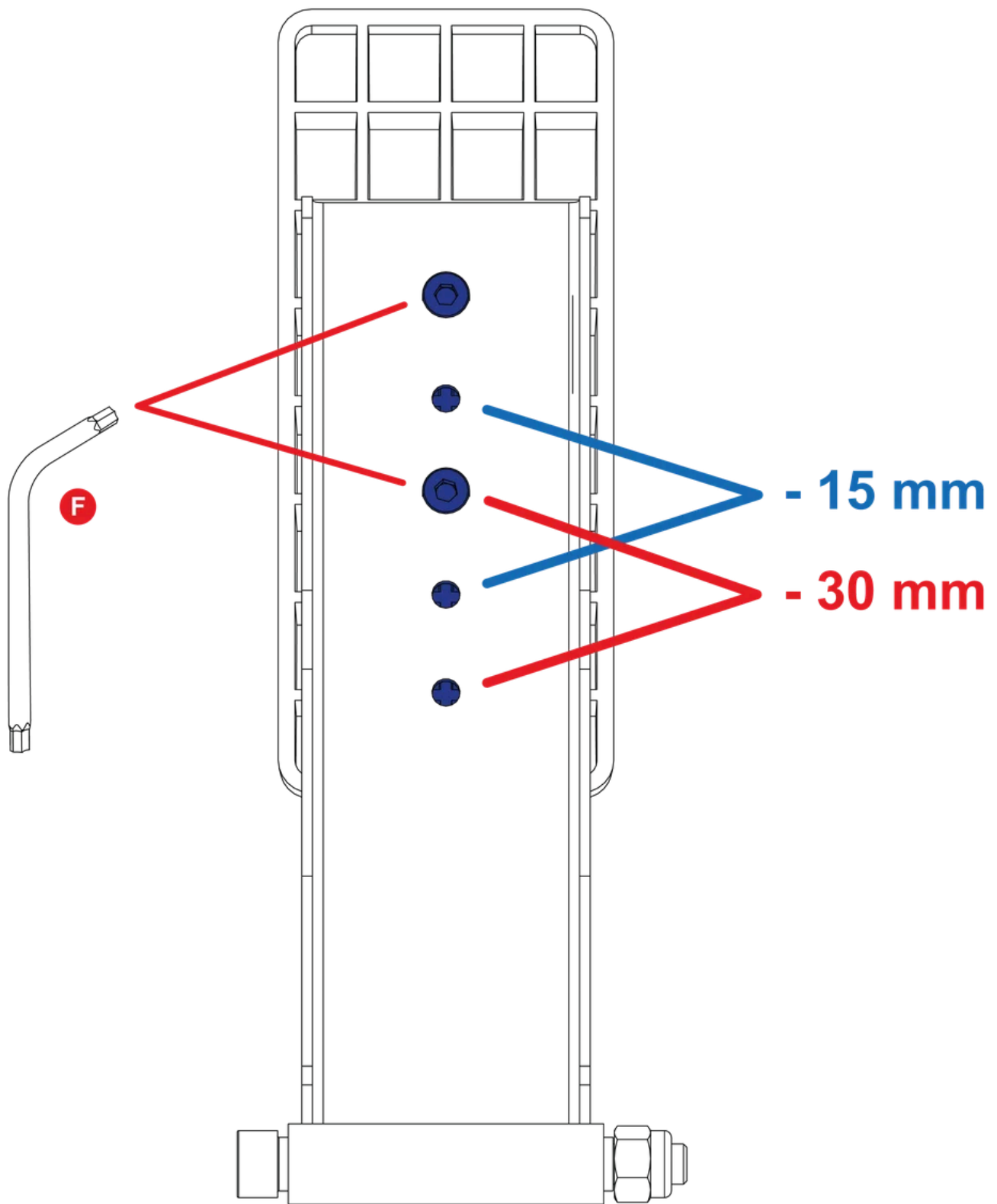
Insert and tighten the countersunk bolts (D) with the included T20 torx key (F).

NOTE: Use either the pre-installed 1.5 mm or 2.5 mm edge protectors (C) (including adhesive) when using the pedals on a floor as shown below.



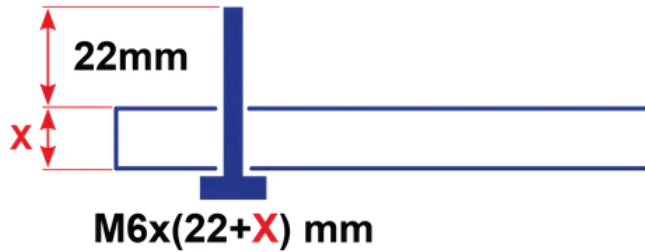
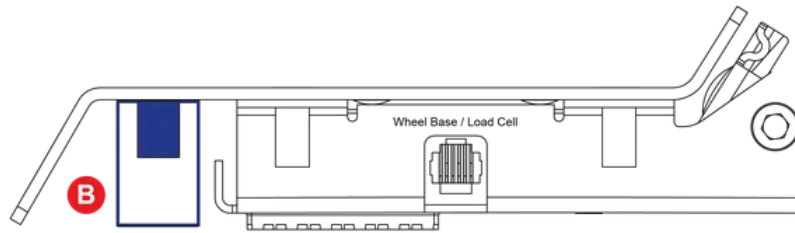
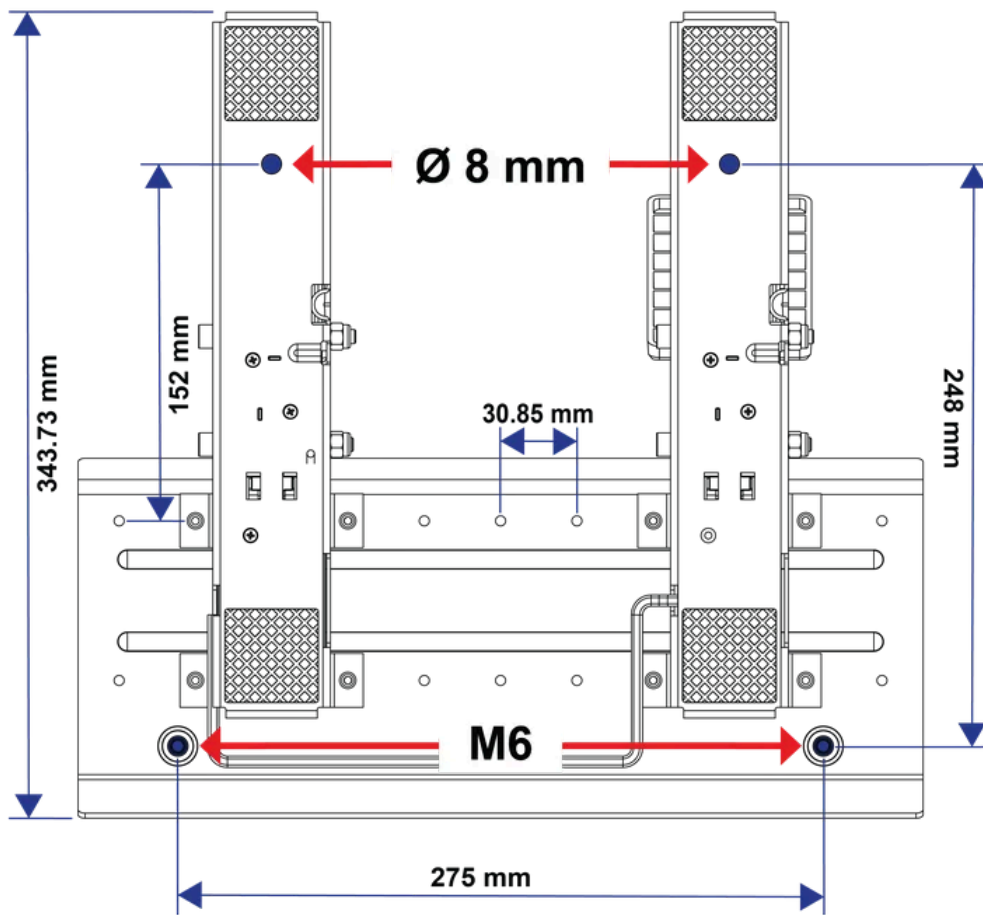
4.2.2 PEDAL PLATES

All CSL Pedals pedal lever units feature adjustable pedal plates to suit your pedal plate height preferences. There are 3 height settings that can be adjusted in descending increments of 15 mm. Use the included T20 torx key (F) to loosen the bolts in order to perform the adjustment.



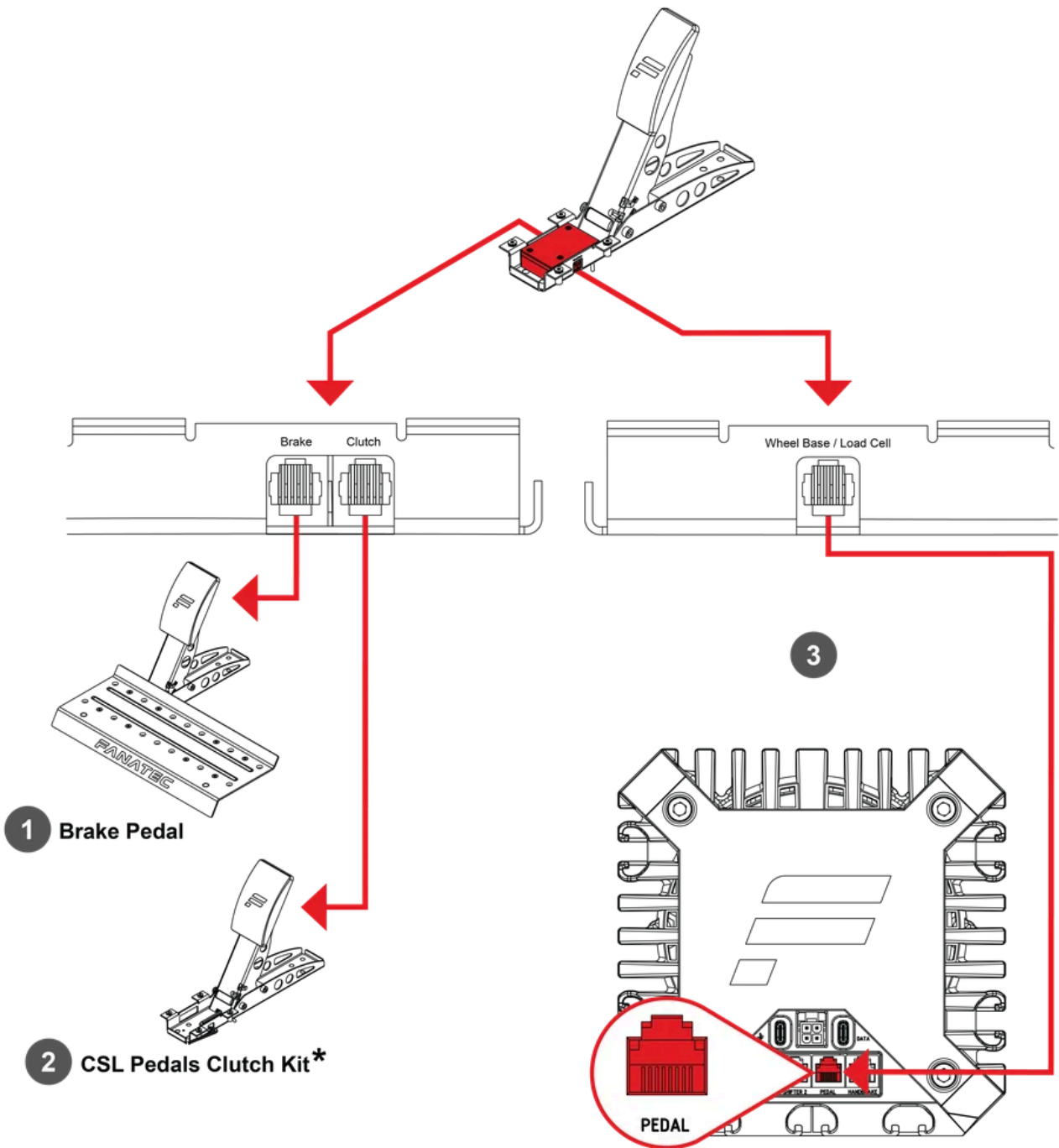
4.3 HARD-MOUNT

Hard-mount using all four mounting holes (bolts are not included). Download the [drilling template](#) from the product page on [fanatec.com](#).



4.4 CONNECTIONS

ATTENTION: Do not connect any devices via the RJ12 ports found on the gas pedal lever unit which are not appropriate Fanatec® products. Doing so may cause damage to the pedal set and / or connected devices, and is not covered by the warranty.



1 Brake Pedal

2 CSL Pedals Clutch Kit*

3

1 - Brake Pedal

2 - CSL Pedals Clutch Kit (sold separately)

3 - Port only for Wheel Base or CSL Pedals Load Cell Kit. **ATTENTION:** Connecting any other pedal or peripheral to this port may cause permanent damage!

4.5 RECOMMENDED ACCESSORIES

We highly recommend the following accessories to upgrade the functionality of your CSL Pedals. Check them out at fanatec.com.

NOTE: Please read the quick guides of the following accessories for assembly instructions and information.

CSL Pedals Clutch Kit



CSL Pedals Clutch Kit.
Check it out [here](#).

ClubSport

USB Adapter



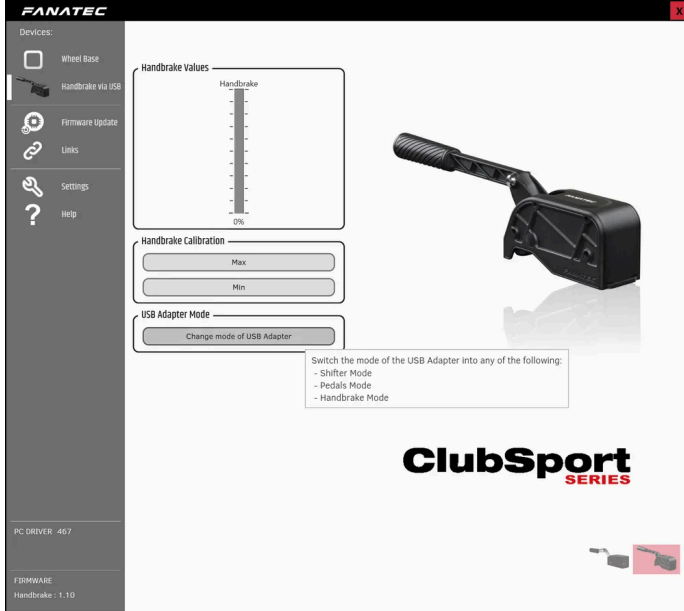
ClubSport USB Adapter
Check it out [here](#).

NOTE: The ClubSport USB Adapter is essential if you want to use the CSL Pedals as a standalone device on PC via USB.

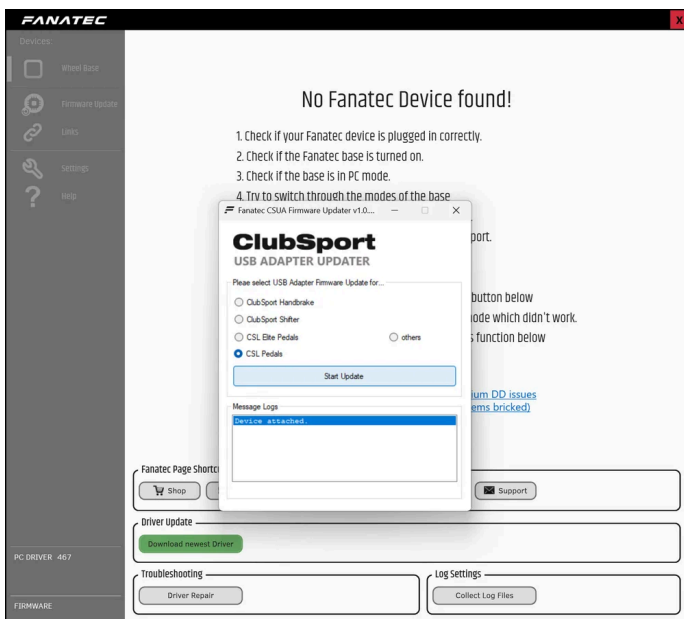
Firmware installation instructions using the ClubSport USB Adapter

Download the latest PC driver from fanatec.com/driver in order to proceed. Follow instructions provided by the Driver & Firmware Instruction Manual found in the downloaded folder.

Once installed, open Fanatec Control Panel.



If the Fanatec Control Panel does not show the CSL Pedals, click 'Change mode of USB Adapter'.



Click on 'CSL Pedals' to select the correct firmware, then click 'Start Update' to initiate the firmware update.



You can choose the correct pedal set up (two or three pedals) in the lower right corner of the Fanatec Control Panel.

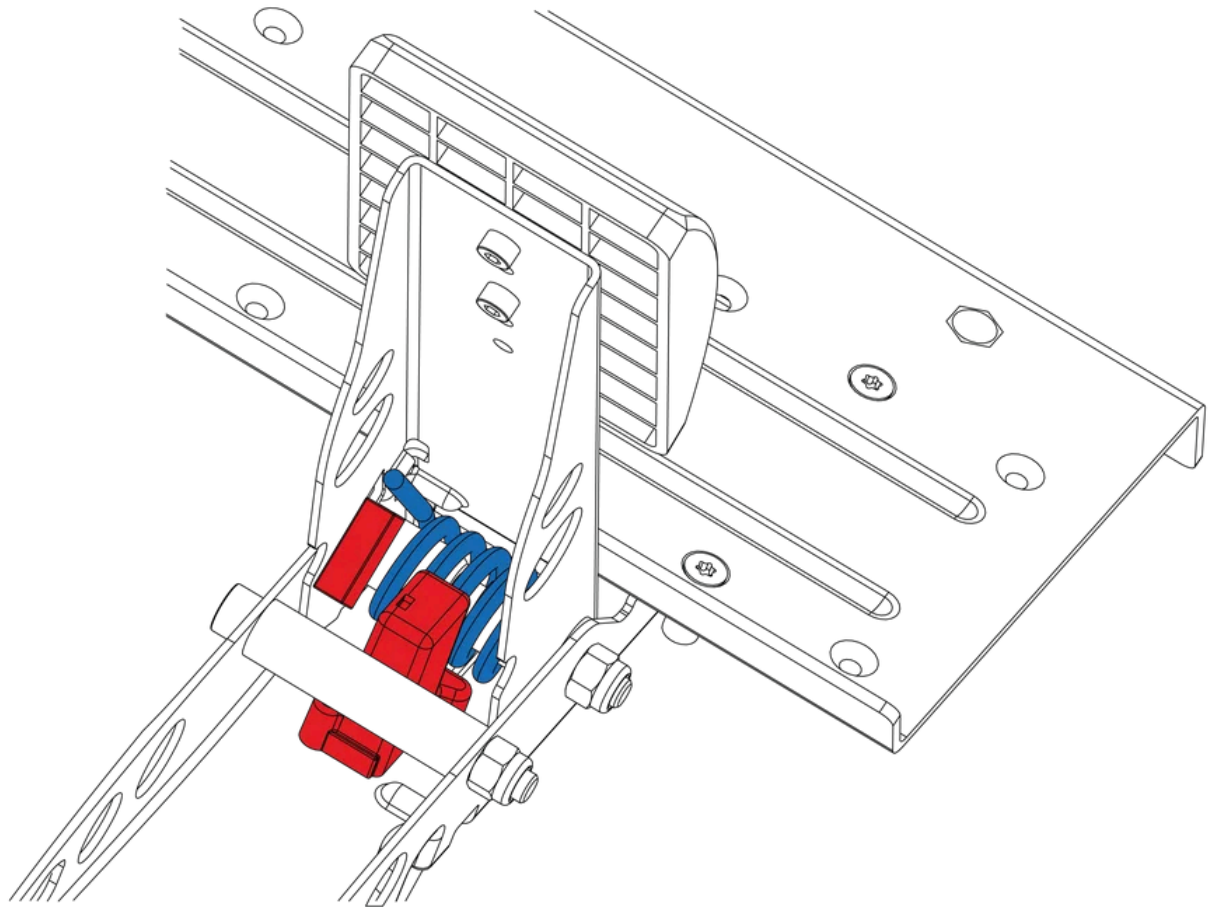
5. CLEANING

Clean only with a dry or slightly damp microfibre cloth. Using cleaning solutions may damage your CSL Pedals

6. MAINTENANCE

The appropriate parts of the CSL Pedals are well lubricated with lithium grease out-of-the-box. Should you feel or hear grinding as a result of extensive usage over time, apply lithium grease to the parts highlighted in BLUE below.

ATTENTION: Do not apply any form of lubricant to the parts highlighted in RED below.



7. TROUBLESHOOTING

The CSL Pedals must not be modified in any way, other than what is explicitly described in this manual. Corsair Memory, Inc. expressly prohibits analysis and utilisation of the electronics, hardware, software and firmware contained in this device. In case difficulties occur regarding utilisation of the CSL Pedals, please use the following troubleshooting guide. You will find further details and contact information on <https://help.fanatec.com/hc/>

If the CSL Pedals is not working properly:

Problem Description	Solution
The PC driver or the wheel base does not recognise the CSL Pedals.	Make sure that you have updated your wheel base and ClubSport USB Adapter firmware to the latest firmware version contained within the latest PC driver which can be downloaded from https://www.fanatec.com/s/download-apps-driver
	Ensure that you are using the RJ12 cable included with the CSL Pedals package.
	Ensure that the RJ12 cables are plugged in the correct ports of the CSL Pedals located on the gas pedal module and the correct ports of the wheel base and ClubSport USB Adapter. See section 4.4 "Connections"

8. VIDEO GUIDE

Watch our Video Guides:

[CSL Pedals](#)

[CSL Pedals Clutch Kit](#)

[CSL Pedals Tuning Kit](#)

The product warranty is provided by CORSAIR MEMORY, Inc. Refer to the terms & conditions of CORSAIR MEMORY, Inc. on [fanatec.com](https://www.fanatec.com)